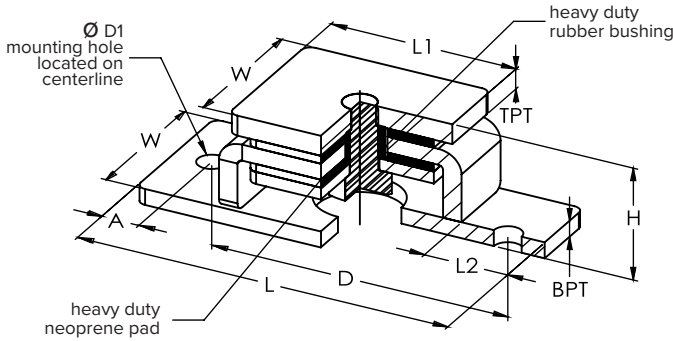
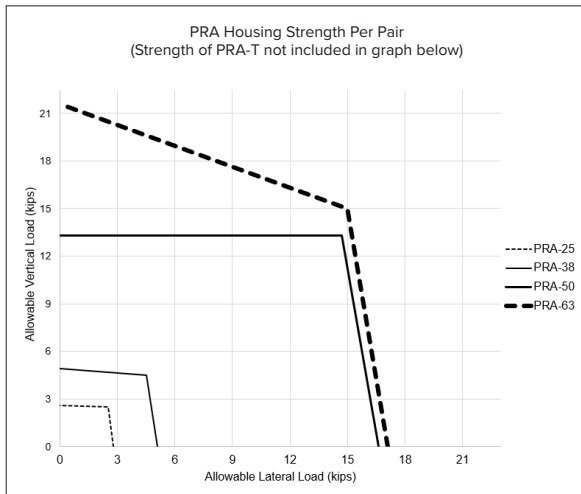
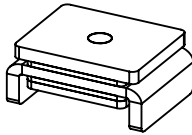


PRA

shown with cut-away



PRA-S

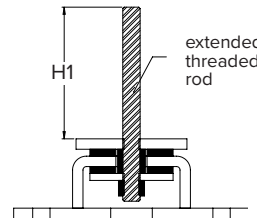


MOUNTING DIMENSIONS

Model	Ø D1 Mounting Hole		D		W		A	
	in	mm	in	mm	in	mm	in	mm
PRA-25	½	13	5	127	2	51	¾	22
PRA-38	⅝	16	6 ½	165	3	76	1	25
PRA-50	¾	19	8	203	4	102	1	25
PRA-63	⅞	22	9 ⅝	245	5	127	1 ½	29

NOTES

- This product comes in different configurations:
 - PRA (All Directional Pipe Riser Anchor with base plate and mounting holes for attachment to concrete or steel).
 - PRA-T (All Directional Pipe Riser Anchor with base plate, mounting holes and extended threaded rod). Available models shown below.
 - PRA-S (All Directional Pipe Riser Anchor without base plate for welded attachment to steel)
 - PRA-ST (All Directional Pipe Riser Anchor with extended threaded rod and without base plate for welded attachment to steel). Available models shown below.
- Each pair of PRA Pipe Riser Anchor minimizes high frequency noise and vibration transmission by using heavy duty rubber elements between metal components.
- Welded steel construction provided with black oxide or painted finish.
- All Directional Pipe Riser Anchors are always used in pairs.
- All Directional Pipe Riser Anchors are a part of an engineered support system for pipe risers that expand or contract due to changes in temperature - typically between initial installation and operation.



PRA-T - Section View

EXTENDED THREADED ROD INFO

Model	Ø - UNC Threaded Rod		H1	
	in	mm	in	mm
PRA-T-25	½	13	4	127
PRA-T-38	⅝	16	6	152

DIMENSIONS

Model	Housing Capacity Per Pair**		H		L		L1		L2		BPT		TPT		Weight per Anchor	
	lbs	KN	in	mm	in	mm	in	mm	in	mm	in	mm	in	mm	lbs	kg
PRA-25	2600	11.6	2 ½	64	6 ½	165	3	76	1 ⅝	41.4	¼	6	⅜	10	2.9	1.4
PRA-38	4900	21.8	2 ⅞	71	8 ½	216	4	102	2 ⅞	54.1	⅜	10	⅜	10	7.2	3.3
PRA-50	13300	59.2	4	102	10	254	5	127	2 ¼	57.2	½	12	⅝	16	14.8	6.8
PRA-63	21600	96.1	4 ⅝	117	11 ⅞	302	6	152	2 ⅞	65.1	⅝	16	¾	20	28.4	12.9

**Lateral capacity is shown for a pair of guides fully welded to structure. Attachment to structure typically controls lateral capacity of guides

Project:			Model:			QTY of Pairs Required:		
Customer:			Tag:					
Consultant:			Comments:					
Dwg No.:	Rev:	Drawn by:						
V-A Project Manager:								