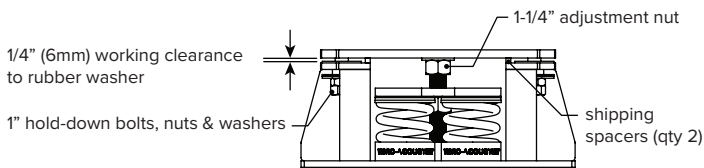
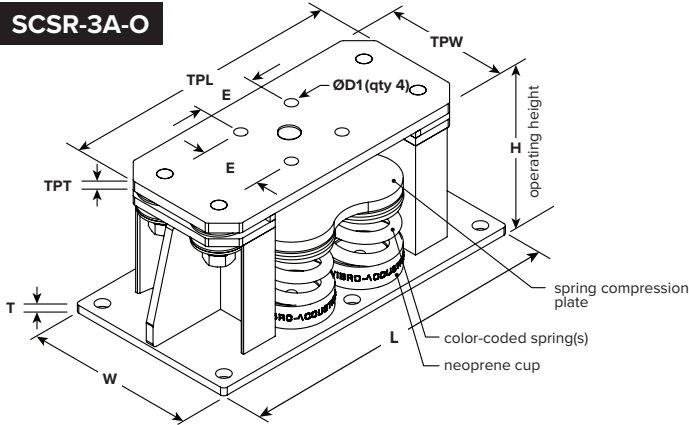


tel: 416-291-7371
fax: 416-291-8049

1-800-565-8401
1-888-811-2264

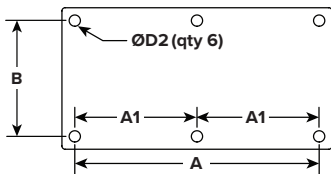
web: www.vibro-acoustics.com
eml: info@vibro-acoustics.com

SCSR-3A-O



DIMENSIONS				
L	W	H	E	T
in mm	in mm	in mm	in mm	in mm
25 1/4 641	14 356	11 3/8 289	3 3/4 95	1/2 13
TPL	TPW	TPT	ØD1	ØD1 - UNC tapped
in mm	in mm	in mm	in mm	in mm
22 559	10 254	5/8 16	3/4 19	5/8 16

BASE PLATE



AxB dimensions typically used for connecting to concrete.

DIMENSIONS			
A	B	A1	ØD2
in mm	in mm	in mm	in mm
23 1/4 591	12 305	11 5/8 295	7/8 22

SCSR Seismic Restrained Spring Isolator

WITH OVERSIZED PLATE

SCSR-3A-O

File No.: DS-SCSR-Q-3A-O-02

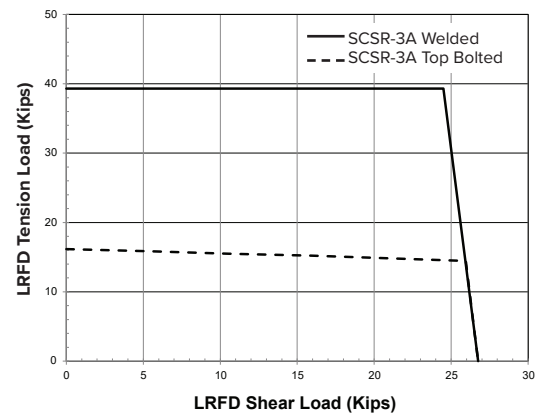
Date: 13 Dec 2023

Supersedes: DS-SCSR-Q-3A-O-01

Date: 5 Jul 2021

PERFORMANCE					
Model	Spring Color outer-inner	Rated Load		Deflection at rated load	Isolator Weight †
		lb	kN	in mm	lb kg
SCSR-3A-O-H-10000	(4)White-Black	10000	44.48	3.0 76	215 97
SCSR-3A-O-H-11200	(4)Red	11200	49.82	3.0 76	215 97
SCSR-3A-O-H-12000	(4)Red-Yellow	12000	53.38	3.0 76	222 101
SCSR-3A-O-H-13200	(4)Red-Red	13200	58.72	3.0 76	227 103
SCSR-3A-O-H-14400	(4)Red-Blue	14400	64.05	3.0 76	227 103
SCSR-3A-O-H-16400	(4)Red-Black	16400	72.95	3.0 76	227 103

† weights are approximate



NOTES

- > "Top bolted" rating is based on using (4) A325 bolts to secure top plate to equipment or base.
- > "Welded" rating is based on using fillet weld with 1/4" leg size and 3" length on both sides of top plate above hold down bolts on 4 corners.
- > Laterally stable and all-direction restrained spring type isolator with steel housing and heavy top plate for equipment support
- > Welded high-strength steel housing with vertically restraining limit stops
- > Top plate and restraining bolts designed to be out of contact with housing during normal operation.
- > Reinforced neoprene elements used in all-directional snubbers to prevent short-circuiting of restraining bolts. Spring supported with neoprene cups for noise isolation.
- > Springs have minimum 50% additional travel to solid and kx/ky ratio of 0.8.
- > Housing and compression plate are hot dip galvanized. Springs are powder-coated enamel; Hardware is zinc plated.
- > As an option, top plates may be supplied with UNC tapped holes for securing to supported equipment.
- > The base plate of the isolator must have continuous support and supporting structure should have a minimum width equal to that of top plate.

OPTION ☐ TAPPED HOLES IN TOP PLATE

Project:			Plan view of mount locations: 		1.	6.
Customer:					2.	7.
Consultant:					3.	8.
Dwg No.:	Rev:	Drawn by:			4.	9.
V-A Project Manager:					5.	10.
TAG:			EQUIPMENT:		QTY of sets required:	
COMMENTS:					DATE:	