

tel: 416-291-7371 1-800-565-8401 web: www.vibro-acoustics.com  
fax: 416-291-8049 1-888-811-2264 eml: info@vibro-acoustics.com

**SIPS Seismic Inline  
Pump Stands**

U.S. Design Patent No. D,699,549 S

**SIPS-125**

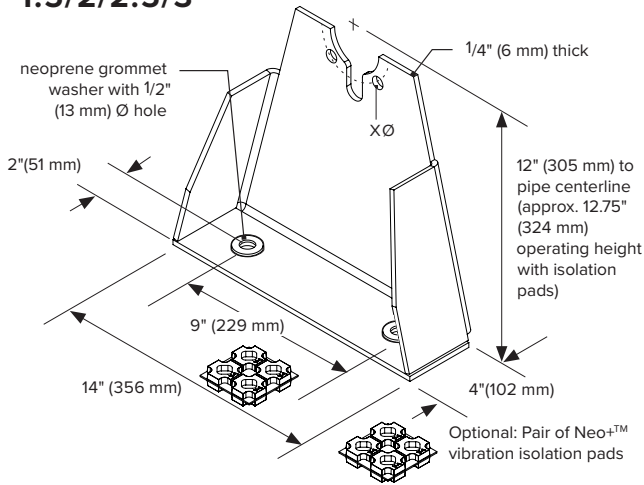
File No.: DS-SIPS-125-001

Date: 03 Sep 2020

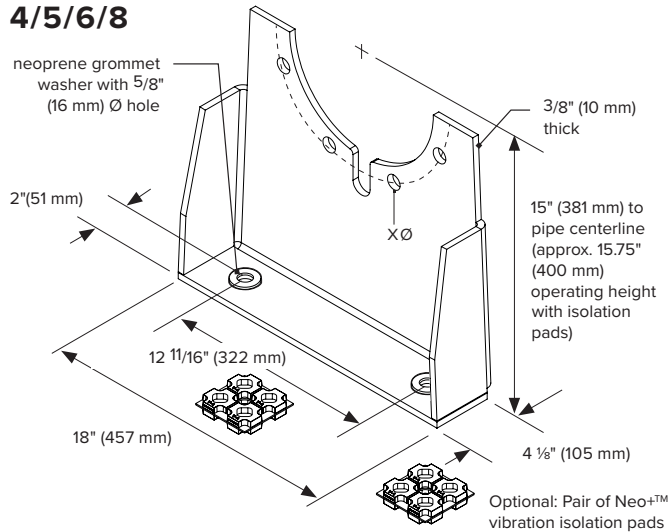
Supersedes: New

Date: New

**SIPS-125  
1.5/2/2.5/3**



**SIPS-125  
4/5/6/8**

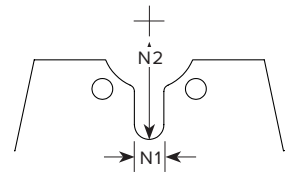


**DIMENSIONS**

Model	Nominal Pipe Size	Bolt Circle Dia (BCD)	Qty - Bolt Hole Diameter (X)	Stand Weight	Optional Neo+ pad Sizes
	in mm	in mm	in mm	lb kg	
SIPS-1.5-125	1 1/2 40	3 7/8 98	2 - 5/8 16	16.2 7.3	Black 4x4
SIPS-2-125	2 50	4 3/4 120	2 - 3/4 19	16.4 7.4	Black 4x4
SIPS-2.5-125	2 1/2 65	5 1/2 140	2 - 3/4 19	16.6 7.5	Black 4x4
SIPS-3-125	3 80	6 152	2 - 3/4 19	16.9 7.7	Black 4x4
SIPS-4-125	4 100	7 1/2 190	4 - 3/4 19	36.0 16.3	Black 4x4
SIPS-5-125	5 125	8 1/2 216	4 - 7/8 22	36.1 16.4	Black 4x4
SIPS-6-125	6 150	9 1/2 242	4 - 7/8 22	36.3 16.5	Black 4x4
SIPS-8-125	8 200	11 3/4 298	4 - 7/8 22	36.4 16.5	Black 4x4

**NOTCH DIMENSIONS**

Model	N1 Width	N2 Length
	in mm	in mm
SIPS-1.5-125	0.94 24	2.94 75
SIPS-2-125	1.06 27	3.50 89
SIPS-2.5-125	1.06 27	4.00 102
SIPS-3-125	1.06 27	4.25 108
SIPS-4-125	1.06 27	5.00 127
SIPS-5-125	1.19 30	5.56 141
SIPS-6-125	1.19 30	6.06 154
SIPS-8-125	1.19 30	7.31 186



**PERFORMANCE**

Model	Max Allowed Lateral Load without Neo+ Pads*	Max Allowed Lateral Load with Neo+ Pads*
	lb kg	lb kg
SIPS-1.5/2/2.5/3	900 408	700 318
SIPS-4/5/6/8	2600 1179	2000 907

\* Max allowed load requires correct attachment to structure

**NOTES**

- Pump stands are designed for minimum 1g lateral seismic load for most matching inline pumps. An analysis must be performed to ensure adequacy for project-specific conditions
- Stands are fabricated with high strength low alloy steel
- Bolt holes located to match ANSI 125 cast iron flange dimensions (Class 125 and 150 use the same bolt pattern)
- Pump stands are powder-coated enamel for corrosion protection
- Cutouts are sized to accommodate standard class 150 slip-on flanges
- Pump stands must be installed in pairs on inline pumps. See installation instructions for further information
- If mounted on a housekeeping pad, the housekeeping pad must be seismically doweled to the structural slab

OPTION <input type="checkbox"/> VIBRATION ISOLATION PADS					
Project:		plan view of stand locations 		Model <b>SIPS-</b>	
Customer:					
Consultant:					
Dwg No.:	Rev:				Drawn by:
V-A Project Manager:					
TAG:		EQUIPMENT:		DATE:	
COMMENTS:					