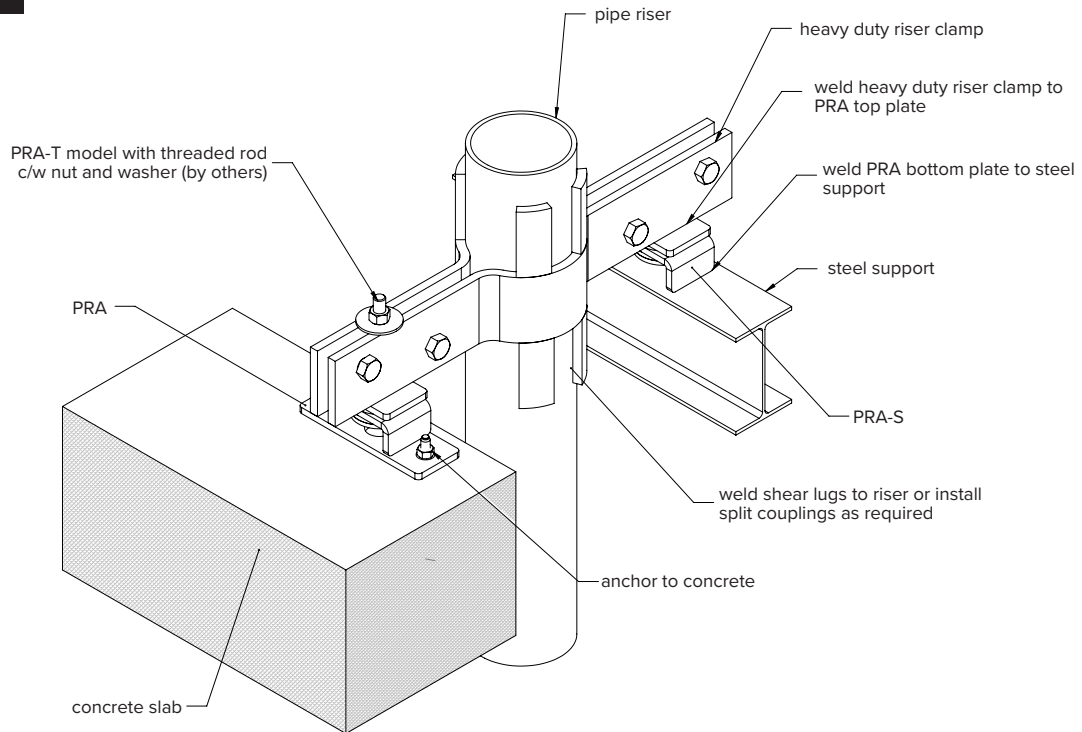


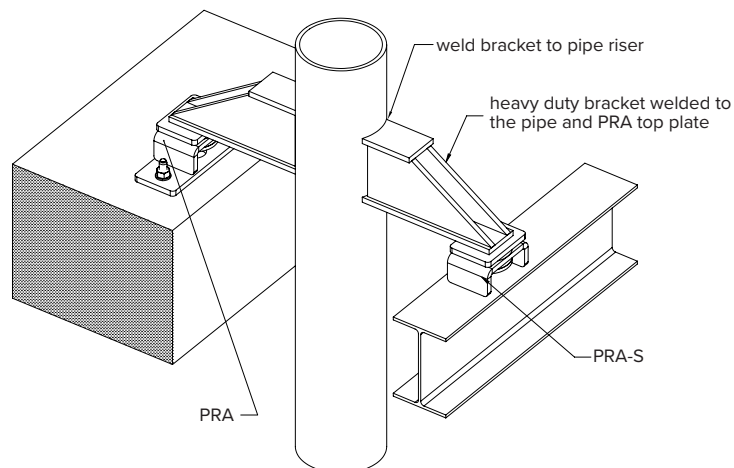
PRA Installation

options using riser clamps



PRA Installation

options using welded bracket supports



INSTRUCTIONS

1. Provide independent temporary supports as appropriate for the pipe riser that do not interfere with the installation of the PRA anchors.
2. Locate each PRA anchor as indicated in the accompanying submittal.
3. Secure each PRA anchor to structure as indicated in the accompanying submittal.
4. When attaching to concrete, be careful to meet edge distance, embedment depth and other installation requirements from anchor manufacturer.
5. Install riser pipe clamps or support brackets as appropriate. Secure or weld to both the pipe riser and the PRA top plate.
6. When welding to the PRA or welding the PRA to structure, do not weld lengths more than 3" at a time to minimize heat buildup in the PRA and allow adequate time for cooling in order to protect internal rubber elements.
7. When using PRA-T and attaching the pipe clamp to the PRA top plate using threaded rod in lieu of welds, ensure riser clamp bolts are installed and minimum torque values are met.
8. Install and adjust other riser supports (e.g., spring isolators) as appropriate before filling the riser and bringing it to its operating temperature.
9. Remove temporary pipe riser supports prior to bringing the riser to its operating temperature. Inspect PRA anchors to ensure each is free of any debris or interference.