

tel: 416-291-7371 1-800-565-8401
fax: 416-291-8049 1-888-811-2264

web: www.vibro-acoustics.com
eml: info@vibro-acoustics.com

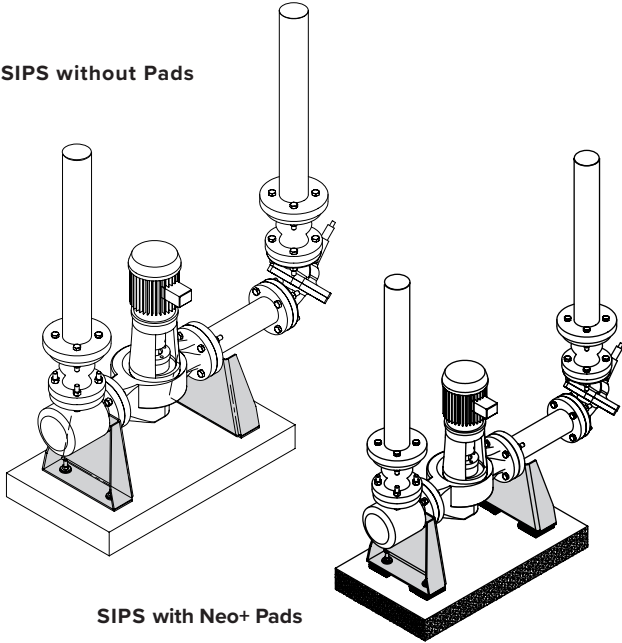
File No.: INS-SIPS-007

Date: 16 Apr 2020

Supersedes: INS-SIPS-006

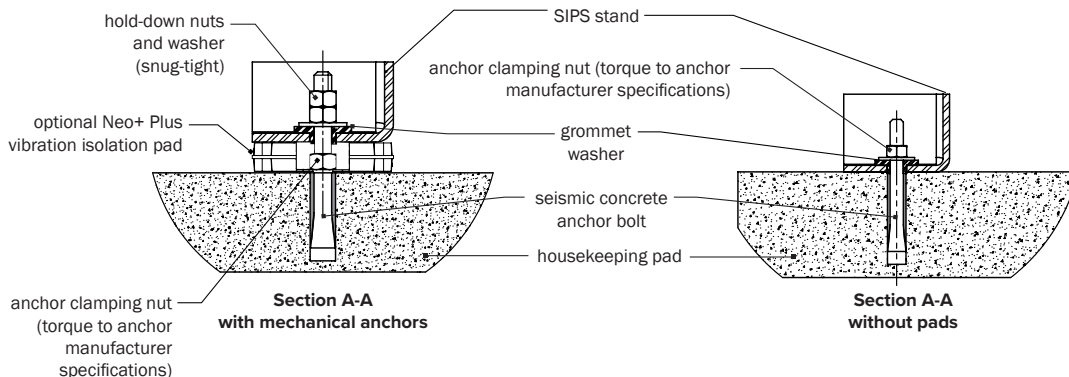
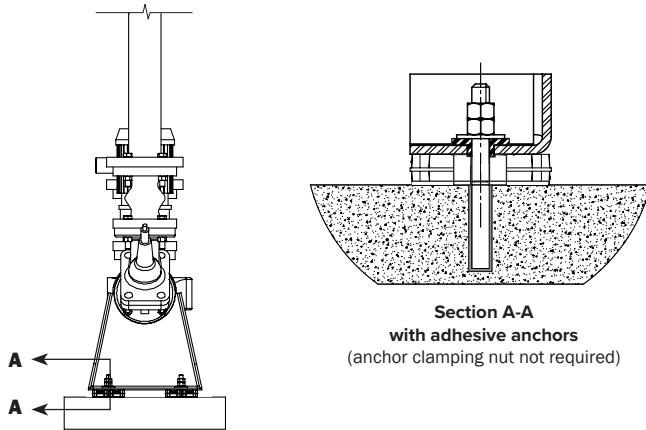
Date: 6 Jul 2016

SIPS without Pads



SIPS with Neo+ Pads

Anchor Details



INSTRUCTIONS

1. Ensure the mounting surface is level and adequate to provide anchorage for the specific seismic design forces. If mounting to a housekeeping pad, ensure pad is thick enough to accommodate anchor bolts and sufficiently doweled in or connected to the structural slab to transfer the seismic loads to the structure.
2. It is common installation practice to assemble the inline pump along with its adjoining accessories before mounting on the seismic inline pump stands to ensure proper location of the stands. Provide temporary supports for the inline pump while locating the pump stands and do not attach vertical pipe drops until the stands are securely in place.
3. Properly locate each pump stand from the submittal drawing using stand model and size as identification. Locate anchor bolt hole locations and make preparations as appropriate (e.g., drill holes and install anchor bolts). The pump assembly may need to be temporarily moved aside or lifted out of the way.
4. Pump stands are to be installed on the accessory or connected pipe side of the flange connection as shown. This can allow complete removal of the pump body without removal of the pump stands.
5. If vibration isolation pads are included, install them as shown here.
6. Place the seismic inline pump stands onto the anchor bolts (and isolation pads if included). Install the grommet washers and the hold-down nuts and washer hand-tight as shown.
7. Lower pump and place the pump to both stands simultaneously to avoid bending either of stands at the time of installation and secure the flanges to the stands. Long flange bolts may be required to accommodate the additional thickness of the pump stands. Torque bolts as required.
8. Complete inline pump installation with connecting pipe and accessories attachment. Ensure connecting pipe weight does not bear on pump stands but is held by other means (e.g., precompressed spring isolation hangers).